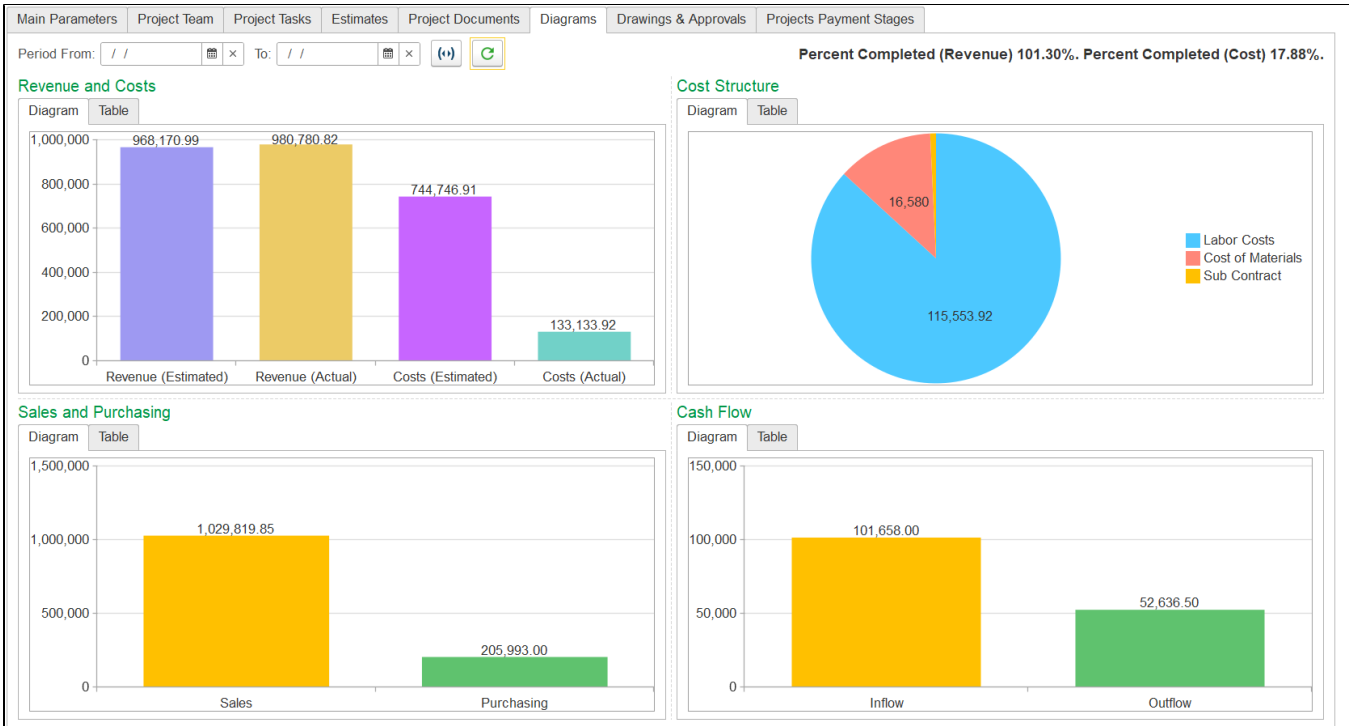


# 3.1.1.6. Diagrams

This tab shows project information using diagrams or tables. You can check how much of the project is completed, both in terms of revenue and cost.



If preferred, switch to the Table tab to see the same data in table format. To view the related documents for a diagram, just double-click on it.

Period From: // To: // [Refresh] [Clear]

Percent Completed (Revenue) 101.30%. Percent Completed (Cost) 17.88%.

### Revenue and Costs

Income Item / Expense Item	Amount (Estimated)	Amount (Actual)
Sales Revenue	968,170.99	980,780.82
Sub Contract	-5,100.00	-1,000.00
Labor Costs	-50,900.00	-115,553.92
Other Operating Expenses	-141,026.91	
Cost of Materials	-547,720.00	-16,580.00
<b>TOTAL:</b>	<b>223,424.08</b>	<b>847,646.90</b>

### Cost Structure

Expense Item	Amount
Labor Costs	115,553.92
Cost of Materials	16,580.00
Sub Contract	1,000.00
<b>TOTAL:</b>	<b>133,133.92</b>

### Sales and Purchasing

Company	Sales	Purchasing
Osama Syed	1,029,819.85	
XYZ Contracting		91,060.00
Top Stone Distribution Ltd		62,296.50
Iqra Building Material LLC		52,636.50
<b>TOTAL:</b>	<b>1,029,819.85</b>	<b>205,993.00</b>

### Cash Flow

Cash Flow Item	Inflow	Outflow
Payment from Customers (Sale of Goods, Works, Services)	101,658.00	
Payment to Suppliers (Goods, Works, Services)		52,636.50
<b>TOTAL:</b>	<b>101,658.00</b>	<b>52,636.50</b>

Use the **Period From** and **To** fields to set the time range for the data you want to view. Click the **Refresh diagrams** button to update the visuals if new information has been added.